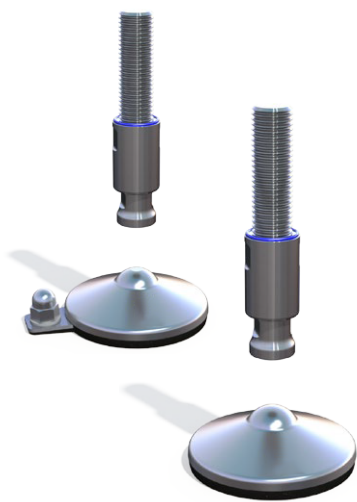


CLEANING AND MAINTENANCE



CLEANING AND MAINTENANCE GUIDANCE FOR NGI'S HYGIENIC MACHINE FOOT XHT

The XHT machine foot is certified according to 3A sanitary standard for machine feet: "88-00".

The patented machine foot seals all moveable parts 100 % hygienically, even if the load on the foot is removed. This System is approved for machines and equipment for the dairy-, brewery and pharmaceutical industry, applications with the highest demands for hygiene and cleaning. The design of the machine foot reduces the cleaning effort to an absolute minimum.



IMPROVED
HYGIENICS



REDUCED
CLEANING TIME



MINIMIZED
WATER USAGE

CLEANING:

1. Rinse with water, (max. temp. ~40°C on proteins).
2. Distribute and cover all surfaces with foaming alkaline detergent for minimum 10 min. All usual products within the industry can be used. Follow suppliers recommendations for temperature and concentration (max. 100°C & concentration depending on foaming product).
3. Rinse with hot water (max. 100°C) with low-medium pressure (approx. 8-12 bar) until visible cleanability is obtained. Cleaning of the foot assembly including sealings and domed nuts can normally be done with a spraying nozzle pointing in a downwards direction approx. 45° from above. For more heavy polluted surfaces, a more direct oriented nozzle can be necessary.

NB. Be careful not to damage sealings if high pressure cleaning is used. Keep nozzle at min. 200-300 mm distance.

4. If mechanical cleaning is necessary because of severe dirt, cleaning must be executed by a soft brush or soft plastic scraper together with a more direct pointing nozzle spray.

NB. Steel scraper, steel brush or other sharp metallic tools are strictly prohibited, since rubber sealings can be severe damaged and the steel surfaces will be scratched.

MAINTENANCE:

1. If the sealings on the sleeve or the sealing on the lower portion of the spindle are damaged they must be replaced. Always use original spare parts from NGI.
2. For foot assemblies with floor fixing always make sure that the floor fixing nut is tightened as specified in the installation manual. Retighten if necessary. If replacement of nuts or washers is necessary, always use original spare parts from NGI.
3. If any adjustments are necessary the foot assembly and the nearest surroundings must be cleaned carefully to prevent any dirt to enter the foot assembly.